

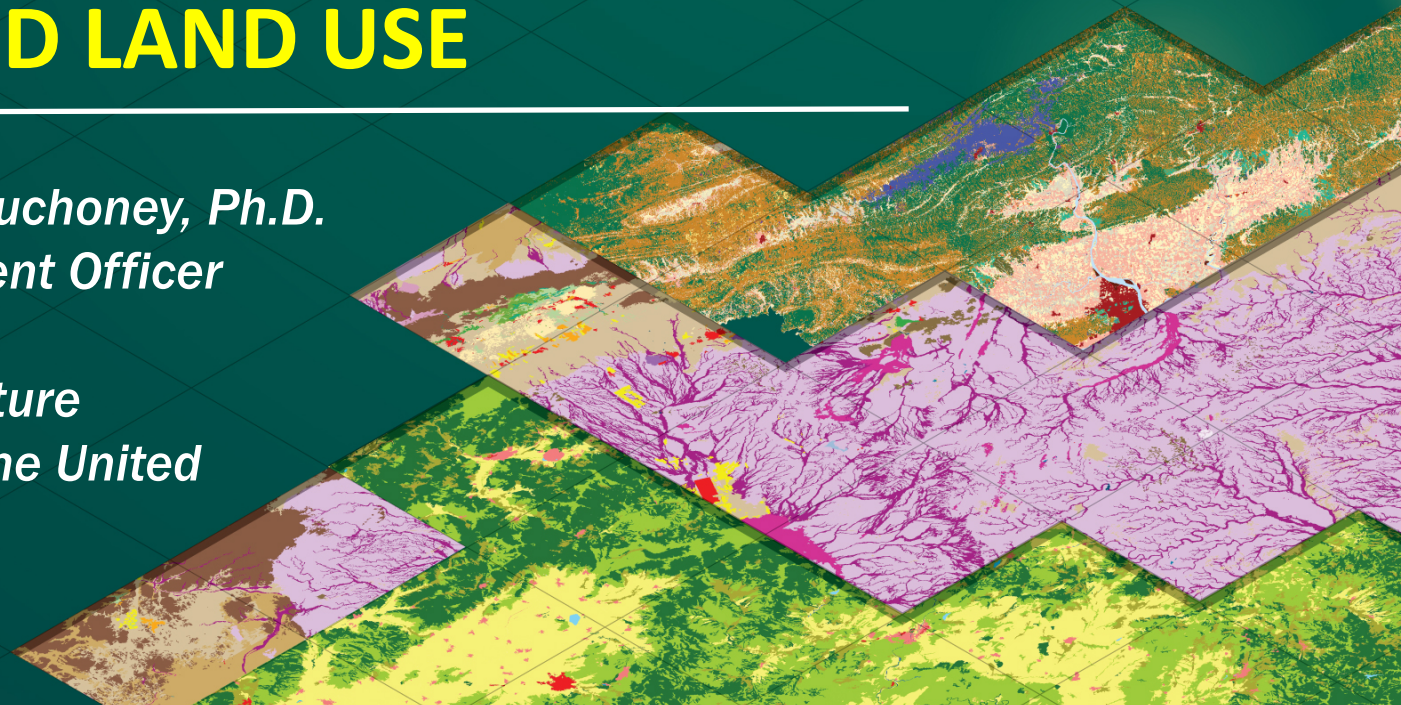


Food and Agriculture  
Organization of the  
United Nations

# ADVISORY GROUP 13 ON LAND COVER AND LAND USE

---

*Dr. Douglas M. Muchoney, Ph.D.*  
*Senior Environment Officer*  
*(Geospatial)*  
*Food and Agriculture*  
*Organization of the United*  
*Nations, FAO*



# Background and Objectives

---

The classification of Land Cover and Land Use (LCLU) is one of the primary measures driving climate science and are critical for addressing many of the UN Sustainability Goals, including the estimation of world agricultural production. Information on LCLU is also crucial for addressing the requirements of the major International Conventions of the UN system i.e., UNFCCC, UNCBD, UNCCD and the UN Forum on Forests. LCLU data standards are critical to support UN Agencies like the Food and Agriculture Organization (FAO) to support disaster preparedness and response, insect and pathogen assessments, supporting agricultural systems, and the water and energy sectors.



# Background and Objectives

---

The ISO/TC 211 Land Cover & Land Use Advisory Group (AG 13) was established to: advise ISO/TC 211 on the application and implementation of the ISO/TC 211 standards on Land Cover Land Use in the UN and other transnational organizations and to coordinate with the context of broader UN initiatives for this purpose.

The AG LCLU will advise ISO/TC 211 on the application and implementation of the ISO/TC 211 standards on Land Cover Land Use in the UN and other mature LCLU initiatives from other international stakeholders worldwide.

The AG LCLU shall: ensure that the ISO/TC 211 LC and LU initiatives and evolving standards are brought to the attention and discussed with other UN agencies involved with the SDG's and those agencies' which utilize LC and LU indicators and also report, in a reciprocal way, with the broader UN-GGIM framework

# Background and Objectives

---

Specifically, the AG LCLU will capture user requirements and provide feedback before proceeding with a work to generate outreach resources. It will be focused on increasing the awareness of the process and the migration of LCLU standards and their uptake. The objective of this UN-GGIM side-event is to raise awareness of the importance of Land Cover and Land Use and collect input on describing the challenges of promoting, developing, and implementing the related standards, and furthermore to inform UN-GGIM of the ISO/TC 211 activities on LCLU, and to open a dialogue for collaboration and communication between ISO/TC 211 and UN-GGIM.

# Background and Objectives

---

The classification of Land Cover and Land Use (LCLU) is one of the primary measures driving climate science and are critical for addressing many of the UN Sustainability Goals, including the estimation of world agricultural production. Information on LCLU is also crucial for addressing the requirements of the major International Conventions of the UN system i.e., UNFCCC, UNCBD, UNCCD and the UN Forum on Forests. LCLU data standards are critical to support UN Agencies like the Food and Agriculture Organization (FAO) to support disaster preparedness and response, insect and pathogen assessments, supporting agricultural systems, and the water and energy sectors.



# Agenda

---

**08:00 - 08:10**

Convening of meeting and presentation of agenda

Mr Douglas Muchoney, Head of Geospatial Unit, Land and Water Division, Food and Agriculture Organization of the United Nations, FAO

**08:10 – 08:15**

Opening remarks

Kyoung-Soo Eom, Chief, Geospatial Information Section  
Mr Doug O'Brien, IDON Technologies Inc.



# Agenda

---

08:15 – 09:00

## Presentations on the importance of Land Cover and Land Use

- Land Cover and Land Use in the Global Geospatial Information Management Community

Mr Mark Iliffe, UN-GGIM Secretariat

- A Brief History of ISO TC-211 and WG 7

Mr Mats Åhlin, Committee Manager ISO/TC 211 Geographic Information/Geomatics

Ms Agneta Engberg, Senior Advisor, Chair ISO/TC 211



# Agenda

---

- Interlinkages between the AG LULC and the UN Geospatial Network

Mr Toby Wicks, UNICEF and Vice Chair of the UN Geospatial Network (TBC)

- Land Cover Legend Registry

Ms Fatima Mushtaq, Consultant, Geospatial Unit, Land and Water Division, Food and Agriculture Organization of the United Nations, FAO





# Agenda

---

- Land Cover to Land Use - Development of a new International Meta-Language on Land Use 19144-3

Mr John Latham, Senior Geospatial Advisor, UNFAO  
Project Leader Land Cover & Land Use : ISO TC211

- Future UN-GGIM and ISO/TC 211/AG - 13 Activities in LULC – Terms of Reference

Mr Matieu Henry, Officer, Geospatial Unit, Land and Water  
Division, Food and Agriculture Organization of the United Nations,  
FAO



# Agenda

---

09:00 - 09:25

Moderated discussion for collecting input of describing the challenges of promoting, developing, and implementing the related standards

Ms Giulia Conchedda, FAO Statistics and Ms Inge Jonckheere, FAO Forestry

09:25 - 09:30

Future perspectives and closing

Mr Douglas Muchoney, Head of Geospatial Unit, Land and Water Division, Food and Agriculture Organization of the United Nations, FAO

